**DARTRONICS, INC.**

PACKAGING AUTOMATION SPECIALISTS



# 400 Series

## Fully Automatic Pre-set and Random Case Gluers



### Four Column Construction

The use of our unique four column design provides added stability in the folding and gluing sections. Sprung drives take up board tolerances and the compression section ensures secure sealing of cases.



### Robust Construction

High quality components housed in a robust chassis ensure minimal servicing and enable 24 hour operation. Designed for the rigours of typical end-of-line packaging environments.



### Floating Bridge

Fitted as standard to all our case sealers, the floating bridge allows the machine to accept swollen or out-of-specification cases while providing consistent and accurate sealing. This feature also allows quick access to the bottom tape unit with no need to readjust the machine.



### Machine Variants

Machines available in the 400 Series include:

- Fully automatic pre-set size, manual adjustment
- Top only sealing or top and bottom sealing
- Fully automatic random size, automatic adjustment



### Ease of Operation

Simple operator controls for ease of use ensure the machine is available for the maximum time. Clear access provides for easy cleaning and maintenance, minimising down time.



### Low Cost of Ownership

All Endline's machines are designed for maximum efficiency and productivity thereby reducing the cost of ownership to a minimum. Excellent support and training and robust construction ensure the efficient and trouble-free running of your case sealer even in the most rigorous production environments.



# Pre-set Case Sealers



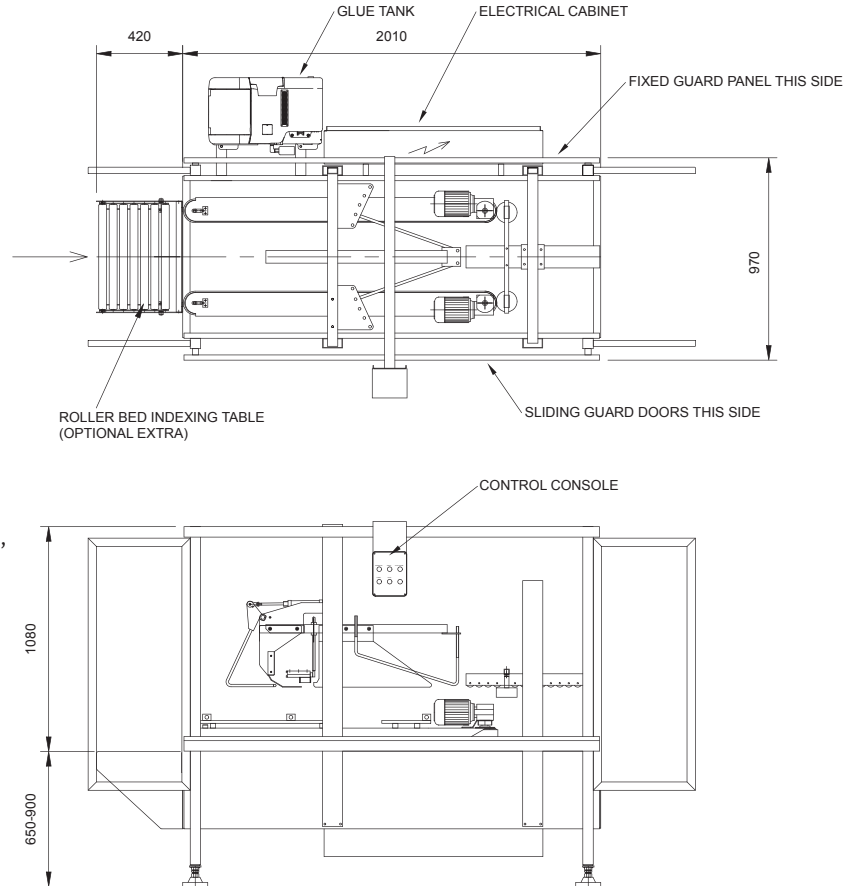
## 400 Series

Fully Automatic  
Pre-set and Random  
Case Gluers

### Options include:

- Indexing table
- Message display unit
- Visual/audible failure alarm
- Discharge blocked sensing

### 400 Dimensions Shown



#### Note:

- Case dimensions outside the above range can be accommodated which may affect the machine size. Refer to quotations for full case size range.

#### Pneumatics

- 80psi (5.5bar)

#### Machine Finish

- Mild steel, powder coated white (RAL 9010) or stainless steel

#### Electrical

- Three Phase:  
380 - 415V, 50Hz, 5.0kW

### Case Dimensions (mm).

	Length	Width	Height
401 Minimum	200	130	100
Maximum	400	400	390
<i>top glue only, bottom drive.</i>			
402 Minimum	160	100	130
Maximum	500	400	490
<i>top glue only, side drive.</i>			
403 Minimum	200	180	170
Maximum	420	320	500
<i>top &amp; bottom glue, side drive.</i>			
407 Minimum	200	180	150
Maximum	500	350	350

*top & bottom glue, side drive, random.*

Minimum and maximum case dimensions are a guideline only. Please contact Endoline to advise.

© Endoline reserves the right to change specifications without prior notice.

## Dartronics, Inc.

150 William Street, Perth Amboy NJ 08861

Phone: 732.324.0800 Fax: 732.324.4488 Toll Free: 1.800.298.8936 E-mail: sales@dartronics.com

