

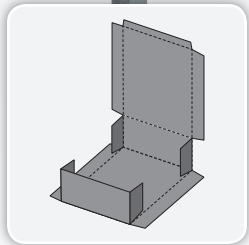


Distributed by
DARTRONICS, INC.
PACKAGING AUTOMATION SPECIALISTS



EnCompass[®] WACP

Wrap Around Case Packer



where products meet packaging[®]

When only the best will do, look no further than the ADCO EnCompass[®] WACP wrap around case packer. With its industry leading performance, modern design and compact footprint, the WACP is ideal for the most demanding and space conscious production environments. Featuring a fully-welded, sanitary, sheet metal frame, ergonomic magazine load height, dual-shaft design for ease of set-up, along with standard servo controls, the WACP handles a wide range of wraparound case sizes with maximum precision and reliability at speeds up to 20 cases per minute. Like all ADCO machines, the EnCompass[®] WACP is constructed out of stainless steel and is available in both, standard and wash-down configurations.

Benefits

- Wrap around cases provide up to 30% material savings over traditional cases
- Stainless steel construction with fully-welded frame provides maximum strength, plus improved sanitation and cleanability over traditional designs
- Fast, easy changeover with dual shafts and motorized overheads along with servo controls maximizes reliability and productivity
- Intuitive and modern interface enhances operator experience and improves overall equipment effectiveness (OEE)
- Full control guide and plowing system maximizes jam protection and reduces downtime
- Advanced guard design keeps operators safe and maximizes maintenance access

EnCompass® WACP - Wrap Around Case Packer

Product Features

- Stainless steel construction
- Compact frame with leveling feet and casters
- High capacity, easy-to-load case magazine
- Servo motion controls throughout
- Modern and intuitive operator interface
- Nordson® ProBlue hot melt glue system
- Allen-Bradley® PLC control package with touchscreen HMI interface
- Category 3 safety system with fully interlocked barrier guard package
- Many product handling and infeed options available

Typical Applications

- Refrigerated & Frozen Foods
- Bakery & Snack Foods
- Confections
- Nutritional Products
- Personal Care
- Pharmaceutical
- Soap & Detergents

Utilities

Electrical

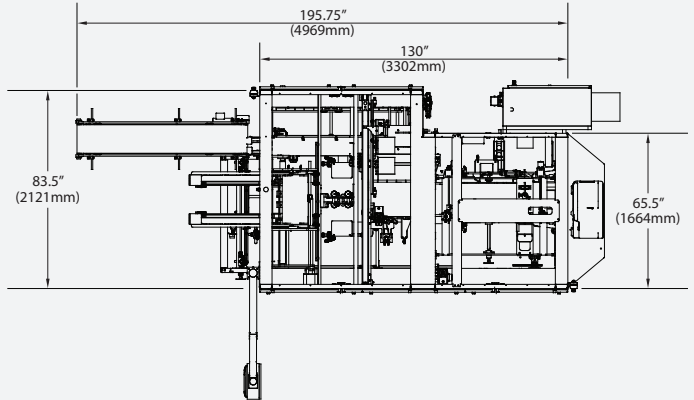
230/460 VAC, 3-Phase with ground (PE), 60 Hz

Air Consumption

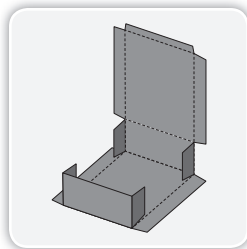
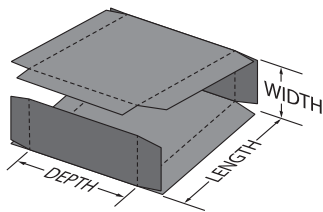
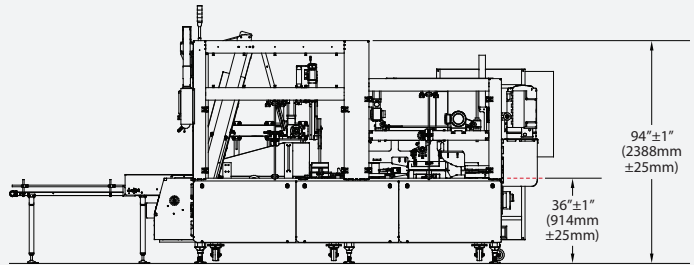
8-9 CFM @ 90 PSI (Venturi)

2-3 CFM @ 90 PSI (Pump)

PLAN VIEW



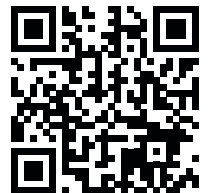
SIDE ELEVATION



CASE SIZE RANGE

Dimensions	(in)		(mm)	
	Min	Max	Min	Max
Length of Opening	4	14	102	355
Width of Opening	3	14	76	355
Case Depth	7.5	22	190	559

Not all minimums and maximums apply.
Special modifications are available to extend the size range.



For more information about this machine, scan the QR code above with your mobile device

FOLDING SEQUENCE

