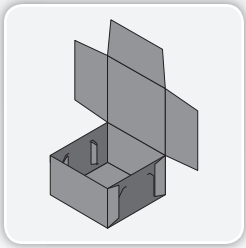


CARTONING MACHINERY

# ZTC-30

## Tri-Seal Carton Closer



where products meet packaging®

Designed to provide maximum carton closing performance and reliability at an affordable price, the compact ADCO Model ZTC-30 Tri-Seal Carton Closer is ideal for the most demanding and cost conscious production environments. Designed to close oversize tri-seal cartons at speeds up to 30 cartons per minute, the ZTC-30 features a three foot infeed conveyor with a built in metering system to ensure proper spacing between packages as they enter the machine. A reliable walking beam indexing system, with optional servo-control, pushes each package into the sealing area where glue is applied to the sidewalls and the cover is plowed. The package is then pushed onto a lugged conveyor where the front flap is glued and sealed. Like all ADCO machines, the ZTC-30 features stainless steel construction and is available in either standard or wash-down configurations.

### Benefits

- Optimized for sealing 'oversize' club store style tri-seal cartons
- Durable yet economical design for low-speed sealing applications saves money
- Stainless steel construction improves cleanability and eliminates corrosion
- Fast, easy changeover reduces downtime and improves productivity
- Compact footprint saves space and eases integration

# ZTC-30 - Tri-Seal Carton Closer

## Product Features

- 3' long low-friction infeed conveyor
- Air actuated carton metering system
- 90-degree lugged transfer for front flap sealing
- Compact footprint
- 2-station air actuated walking beam indexing system, servo drive optional
- Pneumatic side flap sealing system
- Allen-Bradley® PLC control package with touchscreen HMI interface
- Category 3 safety system with fully interlocked barrier guard package
- 4-color stacklight
- Many options available upon request

## Typical Applications

- Snack foods
- Baked goods in trays
- Flow-wrapped products
- Frozen meats
- Dairy
- Personal care
- Cosmetics

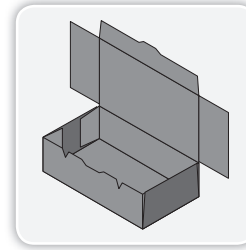
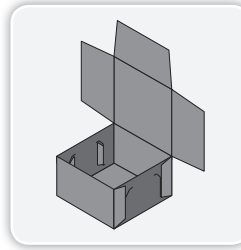
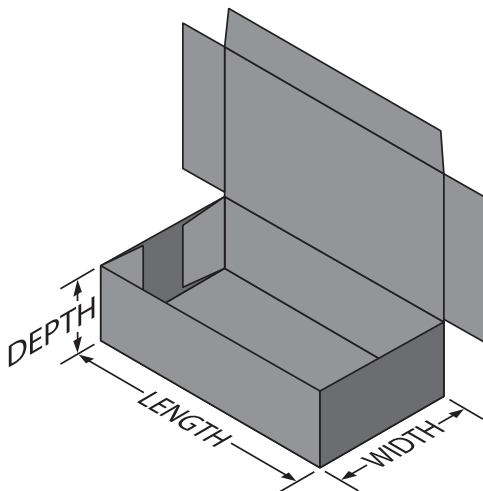
## Utilities

### Electrical

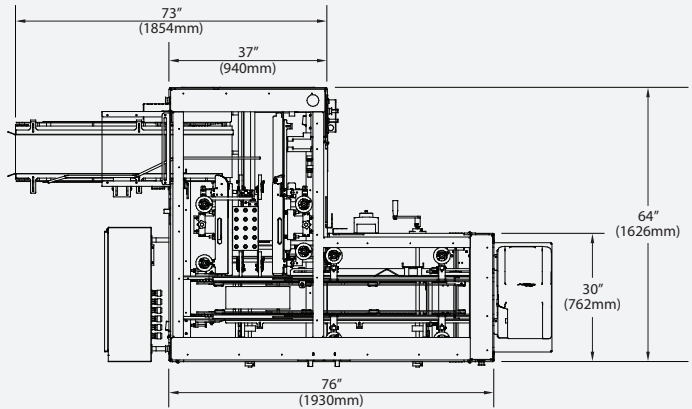
20A @ 230VAC

### Air Consumption

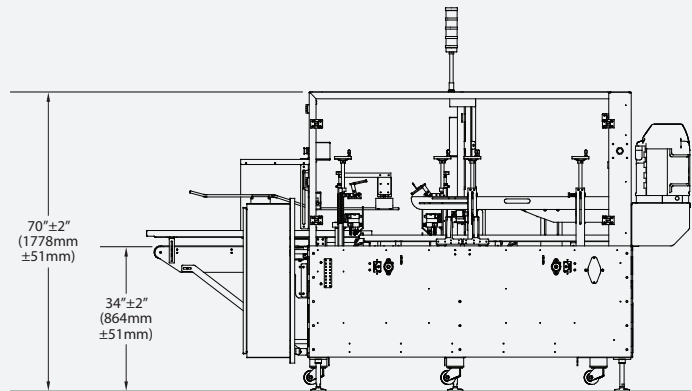
5CFM @ 80 PSI



## PLAN VIEW



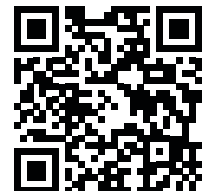
## SIDE ELEVATION



## CASE SIZE RANGE

Dimensions	(in)		(mm)	
	Min	Max	Min	Max
Length of Opening	7	14	178	355
Width of Opening	6	12	152	304
Case Depth	1.5*	8.5*	38	216

Not all minimums and maximums apply. \*With options  
Special modifications are available to extend the size range.



For more information about this machine, scan the QR code above with your mobile device