



MA-DX DELUXE ROTARY TOWER IN-LINE PALLET WRAPPING SYSTEM



The ultimate high-speed pallet wrapping system, even for unstable and random mixed loads.

The MA-DX stretch wrapping system with super-stable 4-leg design and 18 RPM counter-balanced rotary arm can be found in some of America's top Fortune 500 manufacturing and distribution plants, and for good reason. The MA-DX includes a long list of features that contribute to improved productivity and quick ROI.

Among the MA-DX's production improving features are the Insta-Thread™ film carriage with standard 260% pre-stretch for most secure loads at the lowest cost, a time-saving pneumatically actuated film tail cut and wipe plus Orion's industry leading CAT-3 safety features.

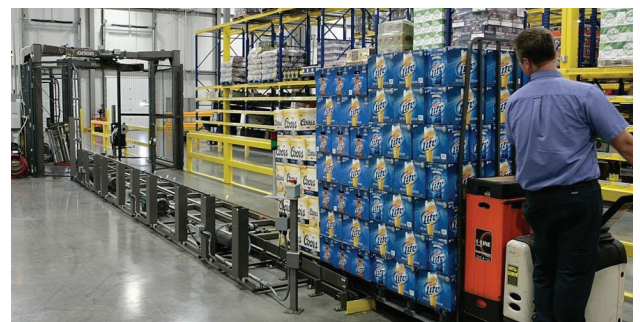
The MA-DX combines seamlessly with the 60 feet-per-minute LoPro Drag Chain triple-strand conveyor that is popular in the beverage industry. The LoPro smoothly conveys up to three 2,500-pound pallets at a time, automatically separating them for wrapping and after wrapping consolidating them again for pickup.

MA-DX FEATURES AND BENEFITS

- Multi-Zone Safety - Stops only the process zone. The operator can switch out film while the product stages on the infeed or continues on the exit conveyors.
- Revo-Logic technology with photo-eye sensors for precise application of programmed wraps—maximizing load containment and film yield.
- Insta-Thread™ Film Carriage standard 260% pre-stretch
- Labor saving film tail cut & wipe automatically secures film
- User friendly 10" IntelleVue HMI
- Allen Bradley/Series PLC controller
- Low maintenance, long lasting AC motors
- Variable Frequency Drives (VFD) controllers

APPLICATION EXAMPLES

BEVERAGE INDUSTRY & OTHER HIGH SPEED ENVIRONMENTS



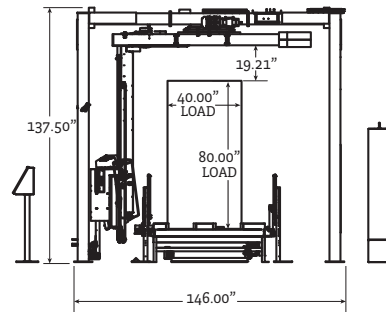
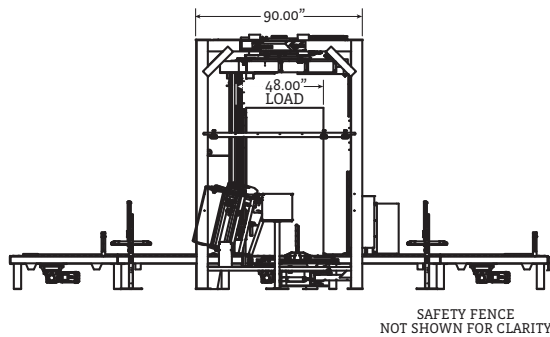
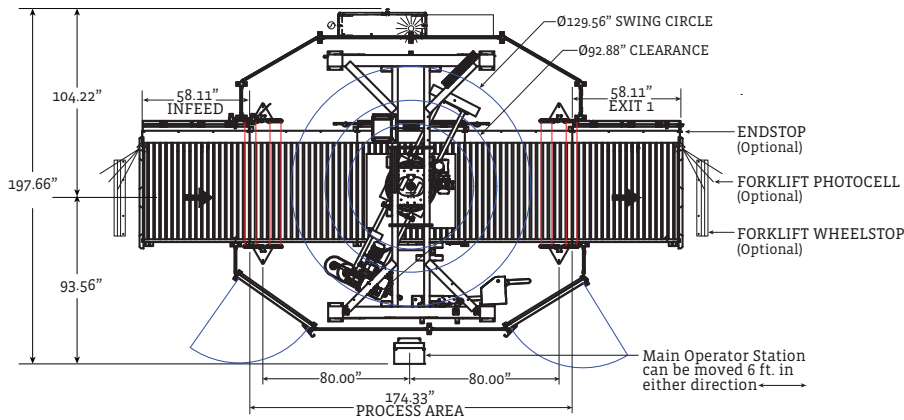
TYPICAL PRODUCT SPECIFICATIONS

Product Type	Rotary Tower In-line Pallet Wrapping System
Footprint	Process Area 174.3" W x 197.66" D x 137.5" H
Speed	18 RPM Standard
Display	10" color IntelleVue HMI
Frame	Heavy-duty welded tubular steel

Standard Voltage	480/3/60 (4 wire, 3 lines plus ground)
Main Electrical Enclosures	Built to UL508A standards and UL Listed (Enclosures optioned for CE will not carry a UL label)
Air Requirements	6 CFM @ 80 PSI
Safety	CAT 3 safety rating

MACHINE DRAWINGS – Dimensions - Inches

MA-DX Rotary Tower Automatic Stretch Wrapper



OPTIONS

- Forklift photocell
- Forklift wheelstop
- Conveyor endstop
- 30" film roll carriage
- LED lighting package
- Film roping
- Scale options
- Upgrade speeds up to 30 RPM
- Load heights up to 110"

STANDARD FEATURES



10" IntelleVue HMI

User-friendly, password protected touch screen controls with up to 9 different wrap recipes.



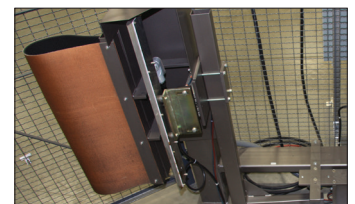
Insta-Thread Film Delivery

Faces the side for easier film roll loading and threading. The system uses specially designed rollers to accurately elongate film at a standard rate of 260%, providing the most secure loads at the lowest cost.



Rotary Slip Ring

The MA-DX uses a high quality slip ring that is virtually maintenance free. The fully sealed unit dramatically reduces the maintenance associated with non-sealed slip ring assemblies guarding against dirt, dust, and debris.



Film Tail Cut & Wipe

Innovative asymmetrical film clamp grips the film web while the "no build up" thermo bar cuts the film. The load seeking pneumatically actuated brush smooths and secures the film tail to the side of the load.