



# LO PRO DRAG CHAIN CONVEYOR & MA-DX PALLET WRAPPING SYSTEM



## Universal loading and smooth, quick conveyance at up to 60 feet-per-minute.

The MA-DX and LoPro Drag Chain triple-strand conveyor work together as the ultimate pallet wrapping system for high volume applications. The 60 feet-per-minute LoPro conveyor keeps pace with the MA-DX's 28 RPM counter-balanced rotary arm wrapper.

The LoPro conveyor eliminates ramps to ensure unwrapped load stability, and the user-friendly 4" pass height makes the LoPro safe and efficient for loading with a pallet jack, electric walkie or forklift.

Convey up to three 2,500-pound pallets at a time. The LoPro automatically separates pallets, wraps each individually, and then consolidates them again for pickup. An integrated digital scale verifies pallet load accuracy.

### LO PRO FEATURES AND BENEFITS

- Rugged low profile triple-strand drag chain
- Convey one, two or three 2,500-pound pallets at time
- 5hp sections for conveyance speed up to 60 ft./minute
- Universal loading with a pallet jack, walkie, or forklift
- Slip clutches at infeed and exit conveyors protect the drive system during loading and unloading
- Eliminating rollers reduces vibration, and increases pallet stability
- Load separation and consolidation using photocell pallet detection
- Digital weigh scale verifies pallet load accuracy
- Push button load release

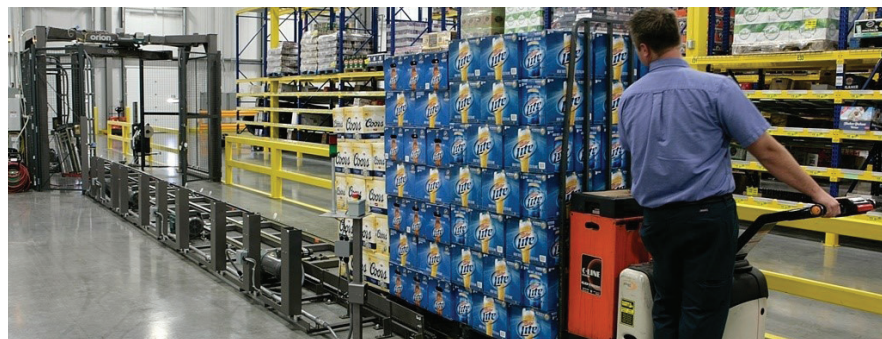
### APPLICATION EXAMPLES

BEVERAGE INDUSTRY

OTHER HIGH SPEED ENVIRONMENTS THAT EXCEED ROLLER CONVEYOR CAPABILITIES

NON-FORKLIFT FACILITIES

HANDLING TALL OR UNSTABLE LOADS

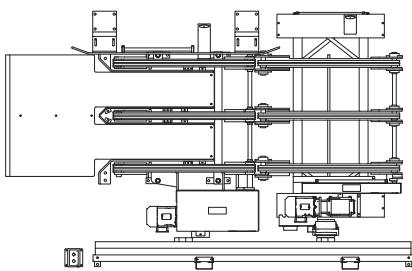


## TYPICAL PRODUCT SPECIFICATIONS

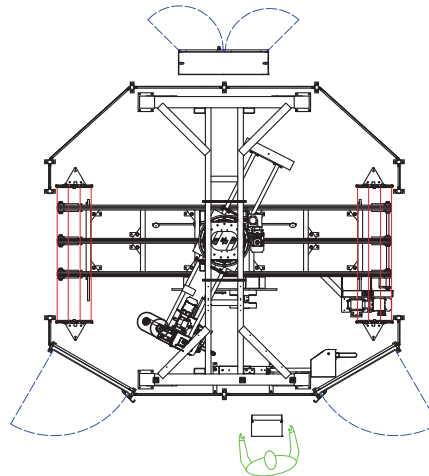
<b>Product Type</b>	Low profile conveyor for safe and efficient loading with a pallet jack, electric walkie, or forklift, combined with a rotary tower automatic stretch wrapper	<b>Display</b>	10" color IntelleVue HMI
<b>Footprint</b>	LoPro Drag Chain w. MA-DX - (3) section In & (3) section Out - 63' long x 15' wide	<b>Frame</b>	Heavy-duty welded tubular steel
<b>Speed</b>	Up to 60 feet-per-minute	<b>Electrical Requirements</b>	NEMA 12
		<b>Safety</b>	CAT 2 & CAT 3 safety rating available

## MACHINE DRAWINGS

Lo Pro Drag Chain Conveyor



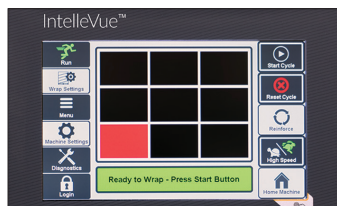
MA-DX Rotary Tower Automatic Stretch Wrapper



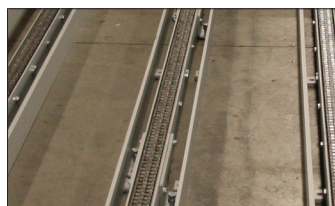
## OPTIONS

- Loading and unloading protective floor plates
- Pallet and walkie guarding and side guides
- 30" film roll carriage
- LED lighting package
- Additional power conveyor sections
- Film roping
- Print labeler system

## STANDARD FEATURES



**10" IntelleVue HMI**  
User-friendly, password protected touch screen controls with up to 9 different wrap recipes.



**Triple-strand Industrial Drag Chain**  
Chain is carbon steel, dual strand, #60 roller chain running on self-lubricating plastic wear rails.



**Slip Clutches**  
When a forklift pushes the load on the conveyor faster than the conveyor drive motor, the drive motor can be damaged. To protect the drive motor, overrunning clutches on the infeed and exit conveyors allow the chains to move freely in the flow direction preventing over-speeding the drive motor.



**Integrated digital scale**  
Indicator with RS-232 serial port for connection with printer, labeler, remote display, and other devices.

- Lb or kg units
- Functions include gross, tare, zero, multiple hold
- Overload/unload indicator
- Scale stability indicator
- Power save and automatic power off functions



**Film Carriage Pre-stretch**  
Film is elongated at a standard rate of 260%, providing the most secure loads at the lowest cost.



**Uniform Film Tension**  
Unique non-contact corner compensation ensures film is applied at the same tension, to every part of the load.