



# ORION FLEX LPA & FLEX HPA AUTOMATIC TURNTABLE PALLET WRAPPING SYSTEMS



## Performs the entire film wrap cycle automatically

Simply place the pallet load on the machine and pull a lanyard switch while backing away. The Flex automatic machines perform the entire wrap cycle without the operator dealing with the film tail at the beginning or end of the cycle – significantly impacting your efficiency by freeing operators to work on other tasks while the machine is wrapping.

The LPA and HPA also include robust features like heavy-duty steel framework and turntable support system, AC motors, and a belt-driven carriage lift. Plus starting in 2020, the LPA and HPA will be transitioning to the the S-Carriage InstaThread film delivery system with a standard 260% pre-stretch and quick and easy loading.

**The Flex LPA and HPA are ready when you are, with a best-in-industry production lead time of just two to three weeks on standard machines.**

### LPA SPECIFIC FEATURES:

- 63" diameter turntable for loads up to 50" x 50"
- Max load height 80"- standard, 110"- optional
- Load with a pallet jack, electric walkie, or forklift
- Full surround deck for easier loading
- DuraGlide support rollers for quiet and reliable operation

### GENERAL FEATURES:

- Automatic Wrap Cycle for Operator Efficiency
- 7" IntelVue color, HD touch screen HMI
- 15 RPM variable speed w. "soft start"
- 5,000 lb. Maximum load weight capacity
- Film saving 260% powered film pre-stretch
- Automatic force to load for even film tension
- AC/VFD motors reduce maintenance
- Forklift portable from front or rear
- Structural steel frame for durability

### HPA SPECIFIC FEATURES:

- 48" x 48" turntable for loads up to 50" x 50"
- Precision turntable with heavy-duty ring bearings
- Octagonal turntable for easy forklift loading
- Side facing carriage for easy film loading

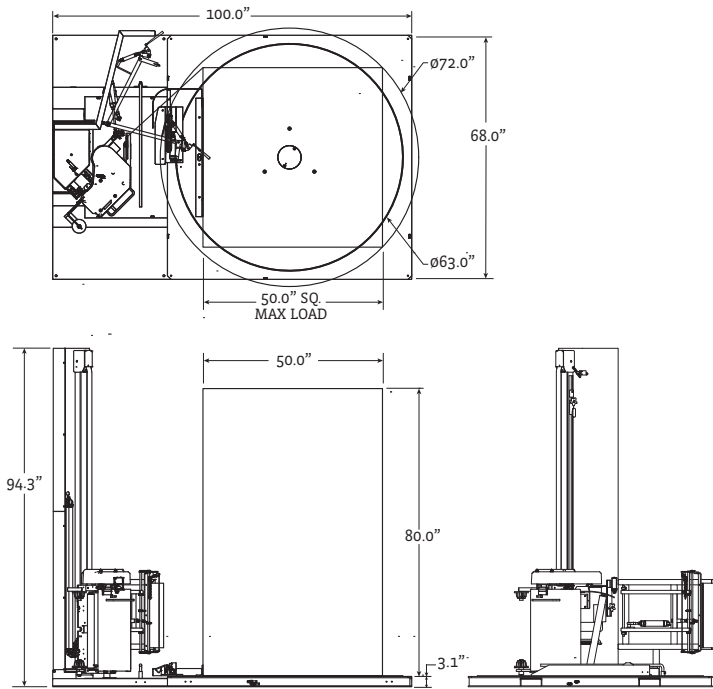
### TYPICAL PRODUCT SPECIFICATIONS

|                     |   |
|---------------------|---|
| <b>Product Type</b> | Turntable automatic stretch wrapping machines |
| <b>Speed</b>        | 15 RPM  |

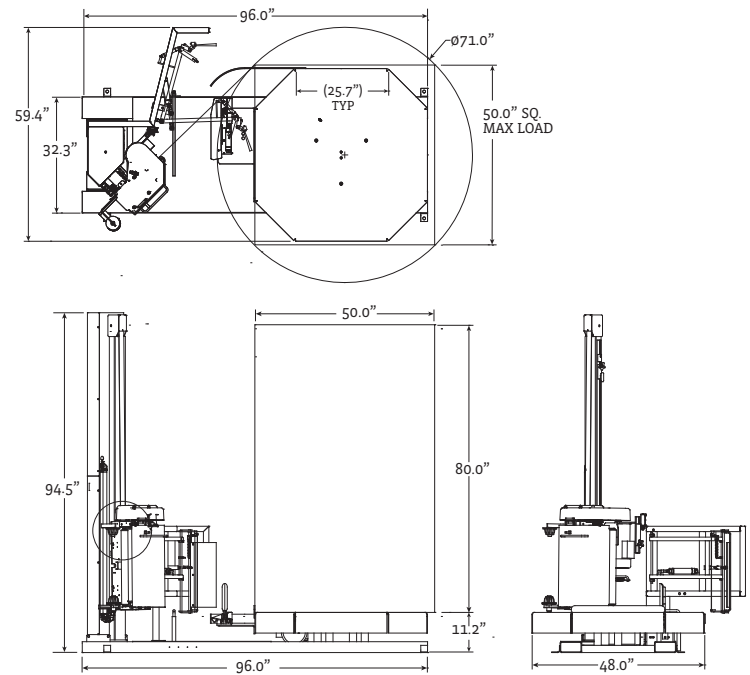
|                                |  |
|--------------------------------|--|
| <b>Display</b>                 | 7" color IntelVue HMI                                      |
| <b>Frame</b>                   | Heavy-duty welded tubular steel                            |
| <b>Electrical Requirements</b> | 115/1/60, 20 Amp electrical service (Not suitable for GFC) |

### MACHINE DRAWINGS

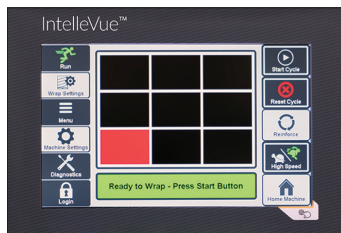
Flex LPA - Dimensions - Inches



Flex HPA - Dimensions - Inches



### STANDARD FEATURES



#### 7" IntelVue HMI

User-friendly, password protected touch screen controls with up to 9 different wrap recipes.



#### Film Carriage Pre-stretch

The S-Carriage InstaThread Film Delivery System elongates film at a standard rate of 260%, providing the most secure loads at the lowest cost. Plus, film loading is fast, safe and easy.

### OPTIONS

- Integrated scale or platform scale
- Extended mast - 110"
- 18" Extended base frame for oversized loads, or split base option
- 1 HP drive upgrade - 6,000 lb. capacity
- Load height photocell regular or specialized for dark/opaque loads
- 30" film carriage
- Dual turntables
- Wireless 3-button remote